



Vol 2



THE MAIN LINE



No 06

*The Monthly Bulletin
of the New England Electric Railway Historical Society Libraries*

August 2010

Hello all –

Summer has been just racing by and here we are coming up on Labor Day along with our first tropical storm of the season (EARL) due on Friday night. It's also 93° outside as I sit typing this

Seashore Goings On –

September and early October are rather event packed at Seashore:

11 September – Member's Day

18-19 September – Maine Antique Power Association - antique engine show

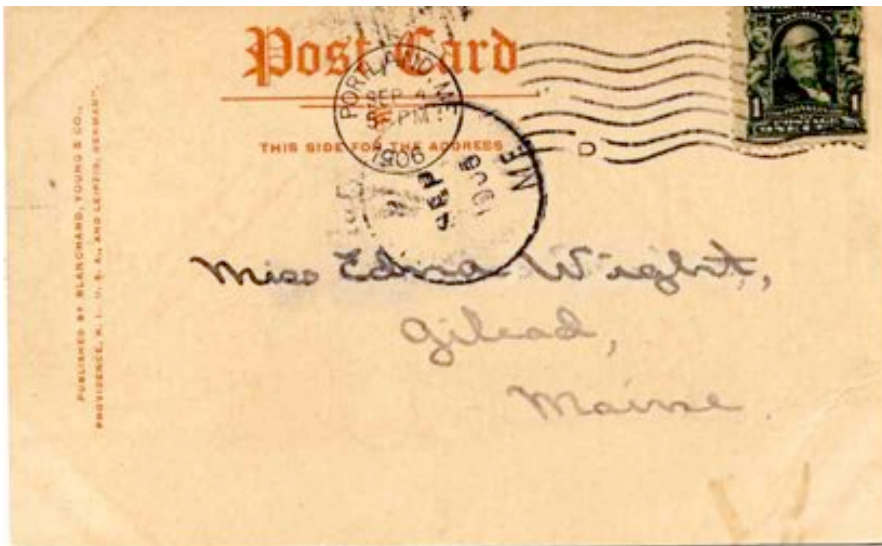
25-26 September (also Oct 2-3) – Pumpkin Patch

9 October – Transit Day

The Collection –

The several levels of inventorying of the overall New England Electric Railway Historical Society (NEERHS) collection are continuing. Specific materials such as albums and individual photos continue to be transported to York County Community College (YCCC) for individual identification, inventory, scanning and packing in protective sleeves, etc. as needed.

Several donations of materials have been received by the Library from Seashore's good friend Bill Young in NC. These included a copy of Derrah's Street Railway Guide (Boston, 1898), a 1910 copy of Country Rides by Trolley published by the Middlesex & Boston St. Ry and a 1908 postcard sent to a lady in Gilead, ME that forecast trolleys on the streets of Gilead.



Another donation, just received, is a private collection of NTSB RR accident reports, 1974 - 2002. Dr. Donald F. Morrison, Professor Emeritus of Statistics, at the Wharton School – U. Penn, has donated these items. The collection consists of 188 reports. About 20 of the accidents occurred on subway, rapid transit, or interurban electric commuter lines.

Information Requests –

The Library continues to receive and respond to information requests through the Museum's website. If you encounter people searching for information that we may be able to help them with please direct them to the library link on the Museum's website.

The Library recently received a request from the Edmonton Transit System for the use of two images from the NEERHS's Foster M. Palmer collection. The images were of an Edmonton Library streetcar for use in a centennial book being issued this year by Edmonton Transit. With the authorization of the Executive Committee a non-exclusive license was issued to Edmonton Transit for that purpose.

Funding-

As part of the Strategic Plan initiated in 2009 the NEERHS is developing a Capital Fundraising Program to support the library's construction and operation. The Library Committee is continuing to work on development of a program.

The NEERHS Grants Committee is looking into other near and longer term grant possibilities for the Library. Library Committee member Herb Pence is a member of the Grants Committee which also includes Phil Morse and NEERHS VP Development Steve McIssac.

Please remember when sending donations for the library to note that it is for Library Development – Fund 951.

Seashore History –

With regard to the two typewritten sheets in last month's issue that described the events surrounding the acquisition of Biddeford & Saco 31, several correspondents have suggested that based upon writing

style, punctuation and indents these sheets were most probably written by John Amlaw, one of Seashore's founders.

According to the photo's notation the following was taken on November 23, 1951. This provides us with a slightly aerial view of the front of the property. Things are still pretty much out in the open and probably pretty cool. Again it is amazing how little there was to work with in those earlier days.



Seashore Trolley Museum – November 23, 1951

This Month's Do You Recognize-

Answer to the July Issue:

July's "mystery" was a string of brand new open cars built by The Newburyport Car Manufacturing Co. They are in the Boston & Maine freight yard off of Pond Street in Newburyport, MA. The front car is destined for the Winchester Ave. RR of New Haven. In the rear is the Essex County Superior Courthouse that still serves the same purpose today. In the present era if you were standing at the rear of that string of cars you would be more or less standing at the CVS store on Pond Street.



Boston & Maine Freight Yard – Newburyport, MA

Below is the courthouse today taken more or less from the far end of the string of cars in the above image. It is located on the Mall, pronounced māl (the British way) – sounds like the man’s name Hal as opposed to the American pronunciation that is similar to fall. It used to be the militia training ground.



Essex County Superior Courthouse (Newburyport) in August 2010

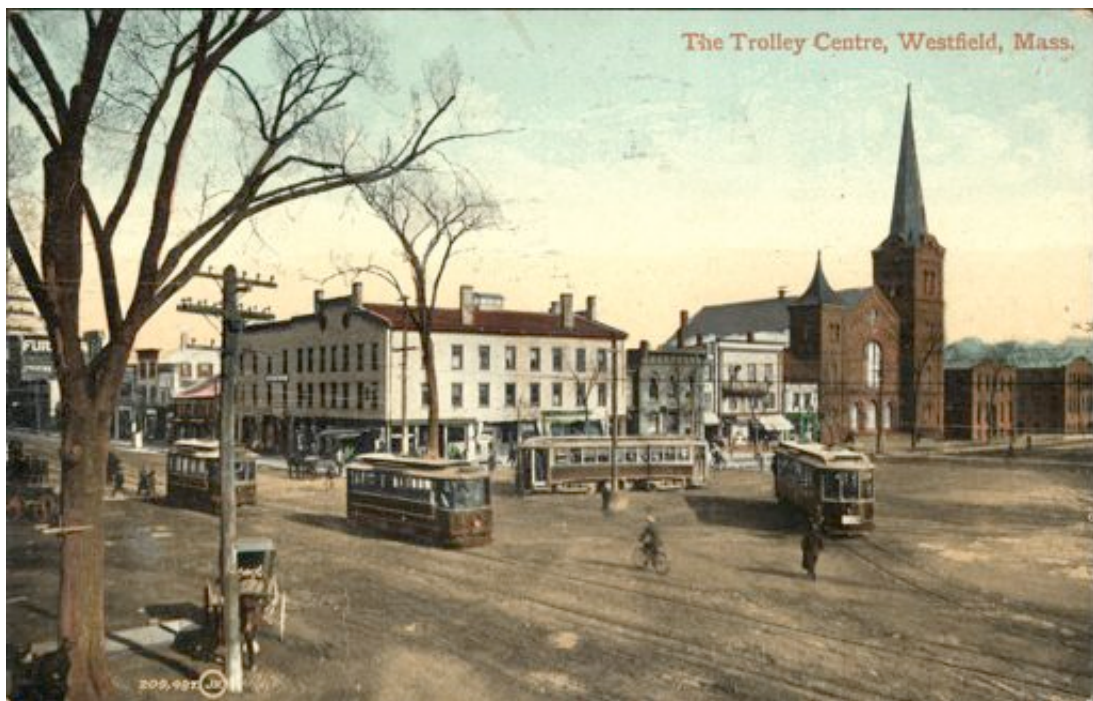
Do You Recognize This? –

For August our location is a little further afield than July's. It's May of 1951 and you can catch a car from here to visit a really pretty and famous waterfall. Hint: It's not Niagara.



Just Interesting –

A postcard view of “The Trolley Centre” in Westfield, MA. Should you wonder Westfield is in the Pioneer Valley on US-20 bordered on the east by West Springfield.



The Trolley Centre in Westfield, MA

And a very pretty car that operated there:



Western Massachusetts Street Railway No. 100 Signed For Westfield

As I was putting this issue together I kept coming across something else interesting – to me anyway. Here is a horsecar stopped in front of the burning Oxford Hotel in Fryeburg, ME on August 31, 1906. This is a postcard image sold in 1907 and it's not clear if the horsecar stopped on a regular trip or brought spectators to the fire.



"The Oxford" where the Fryeburg fire of Aug. 31st started.

Library Committee Meetings –

At this writing the next meeting is scheduled for October 16, 2010 from 10AM to 12 Noon at York County Community College (YCCC) – (2nd Floor) in Wells. PLEASE NOTE: A Working Group will be held afterwards from Noon until 3PM. However, we hope to find a date for one in September as we had to defer our August meeting.

Additionally, tentative projected committee meetings for 2010 are Nov 13 and Dec 4.

Please come and join us at the Library Committee meetings, we all look forward to seeing you and hearing your thoughts and needs. Can't make the meeting – please drop an email to the library SeashoreLibrary@ramsdell.com or use the contact link on the Museum's Internet site.

Next Working Group Meeting-

A full-day working group is scheduled at YCCC from 10AM to 3 PM on 10 September 2010. There is a working group currently scheduled at YCCC from 12 Noon to 3PM after our October 16, 2010 Committee meeting.

Please let me know your thoughts, suggestions, criticisms, etc. The Main Line exists to share and exchange information and ideas about your NEERHS Library.

Ed Ramsdell, Librarian
New England Electric Railway Historical Society
TheMainLine@ramsdell.com